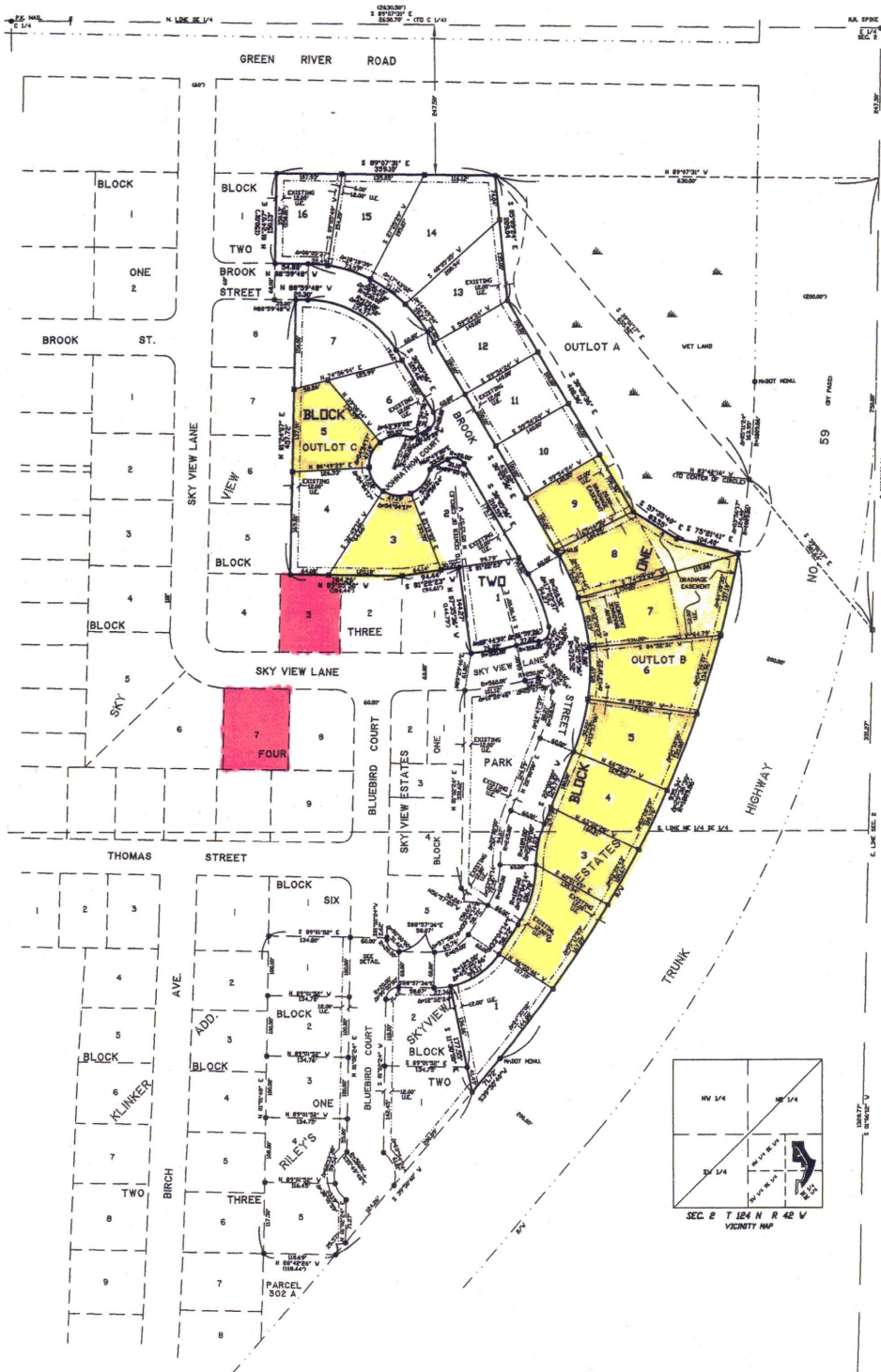


RILEY'S SKYVIEW ESTATES 1ST ADDITION

MORRIS, MINNESOTA



- 1"=100'
- 0 100 200
SCALE IN FEET
- IMPLANT IRON MONUMENT
 - 1/2" IRON PIPE WITH PLASTIC CAP STAMPED "RLS 13145"
 - () RECORD DATA
 - U.E. UTILITY EASEMENT
 - BOLD LINE INDICATES PLAT BOUNDARY

Yellow circle: \$36,500

Red circle: \$31,000

